

Color Management Profile

There are many color management profile variations and they include, but are not limited to, paper types, ink densities, input and output devices, etc. By utilizing the most convenient method readily available from your publishing software, OGP has been managing color profiles using SWOP and GRACOL standards which are easily accessed in Photoshop, and combining our knowledge on G7 procedures has successfully produced better color quality products for our clients.

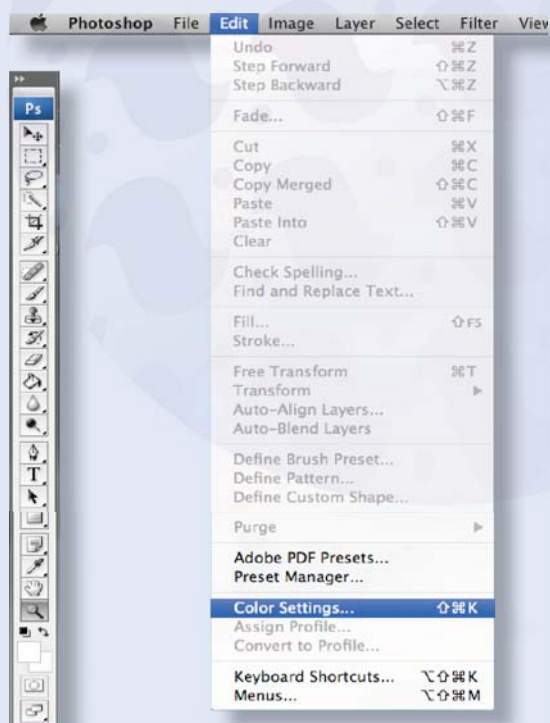
You are able to utilize the “Color Setting” in Photoshop’s setup tool to prepare your image files and achieve a close color simulation matching to our system. In order to reach even closer color-matching results, OGP’s technical team in Hong Kong will evaluate your files and advise if any adjustments are recommended. Our Project Coordination/Customer Service teams in the United States will communicate closely with you, liaising with our technical team. Depending on the condition of your image input files, schedule allowances and your comments, our dedicated staff will work with you to identify the most practical ways to achieve your goals.

RGB to CMYK Image Conversion set up

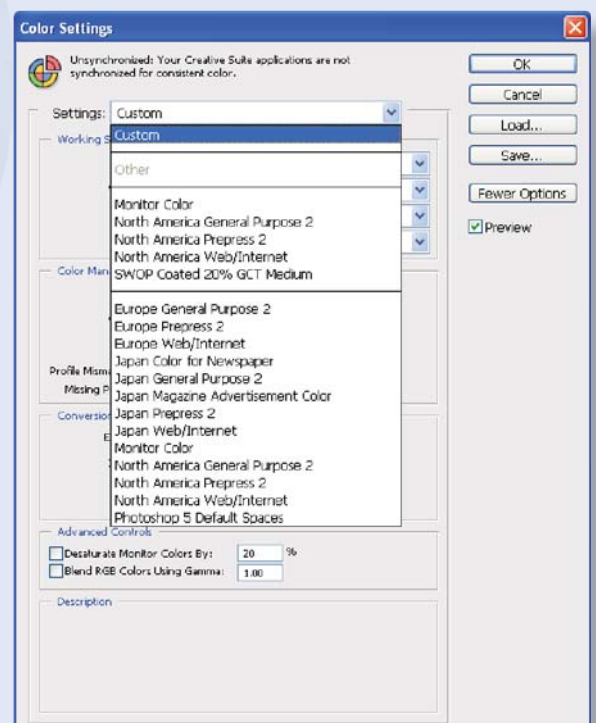
Before reading on, you should always first calibrate your monitor (please refer to the section on Monitor Calibration).

RGB has a larger gamut than CMYK, therefore we suggest for most general situations to make overall color adjustments in RGB mode before converting to CMYK printing mode.

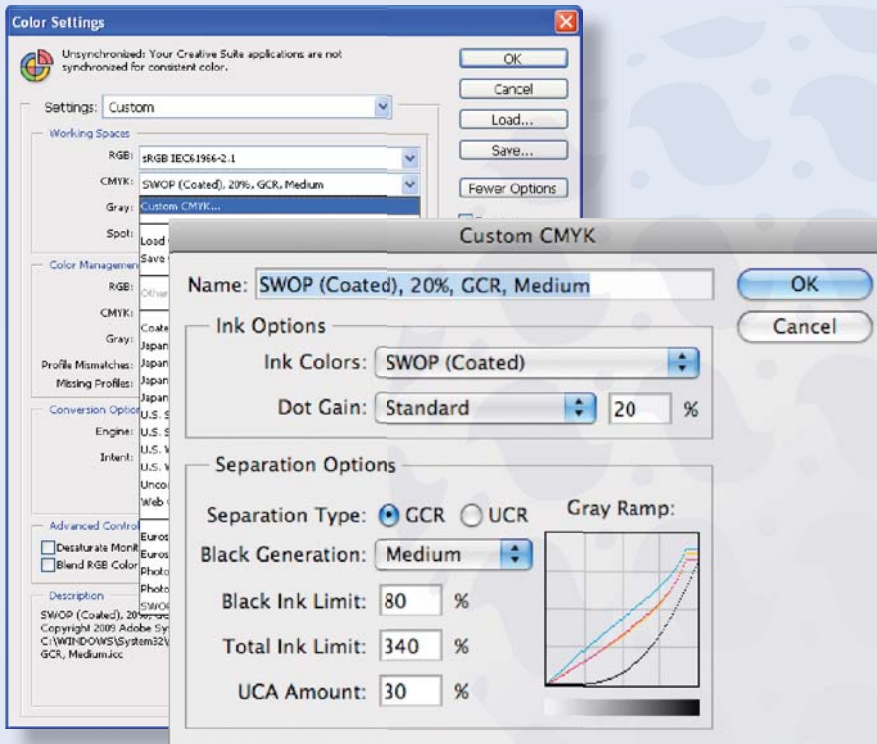
- 1) The following seven steps will help guide you through Photoshop converting RGB mode to CMYK mode for offset printing on coated paper.
- 2) For special projects such as images involving large amounts of gray tone or printing on uncoated paper, please consult OGP regarding making a test proof before outputting your contract proofs.



Step 1:
From the menu bar choose Edit and select “Color Setting”.



Step 2:
In the “Color Setting” window, select “Custom” under **Settings**.

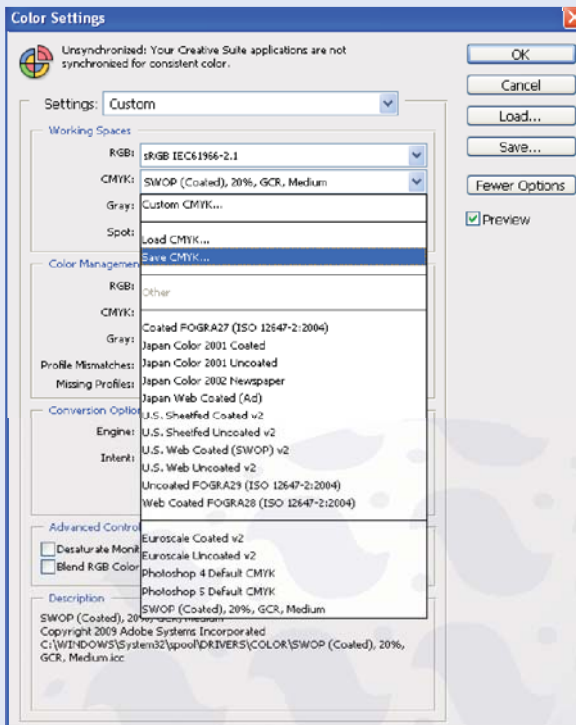


Step 4:
Match all the sections under the **Custom CMYK** window on the right starting from **Ink Options** to **Separation Options**.

The name “SWOP (Coated), 20%, GCR, Medium” will automatically generate once these sections are made.

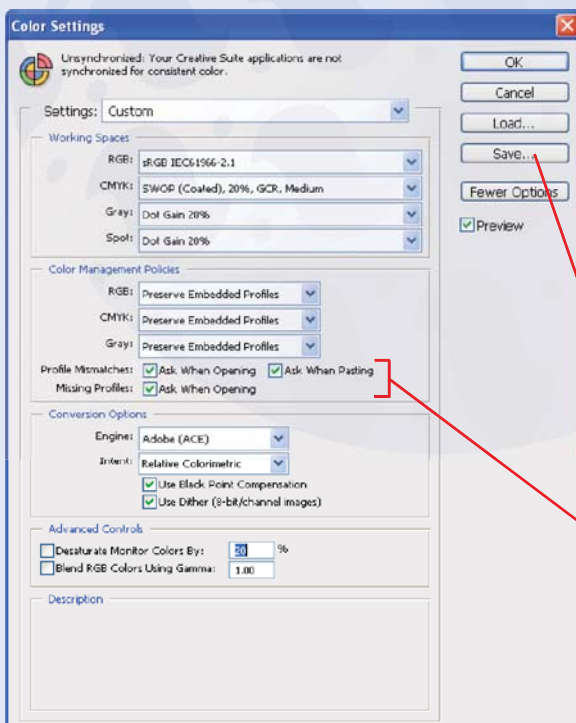
Click **OK** to confirm.

Step 3:
Under **Working Spaces** area, select “Custom CMYK...” under **CMYK**



Step 5:
Save this CMYK conversion profile by selecting “Save CMYK...” so that you can recall it again in the future for RGB to CMYK conversion.

**Important note:
The “SWOP (Coated), 20%, GCR, Medium” profile is NOT for soft proofing setup (see soft proofing setup for more info). This profile is only for conversion usage (from converting RGB files to CMYK files).



Step 6:
Match all the selections in the above **Color Setting** window:

Working Spaces section
Color Management Policies section
Conversion Options section
Advanced Controls section

Step 7:
You can **save** this setting for future recall.

Click **OK** to proceed RGB to CMYK conversion.

Note:
It is a good fail safe practice to check these “Profile Mismatches” & “Missing Profiles” check boxes so that Photoshop will prompt you accordingly.