

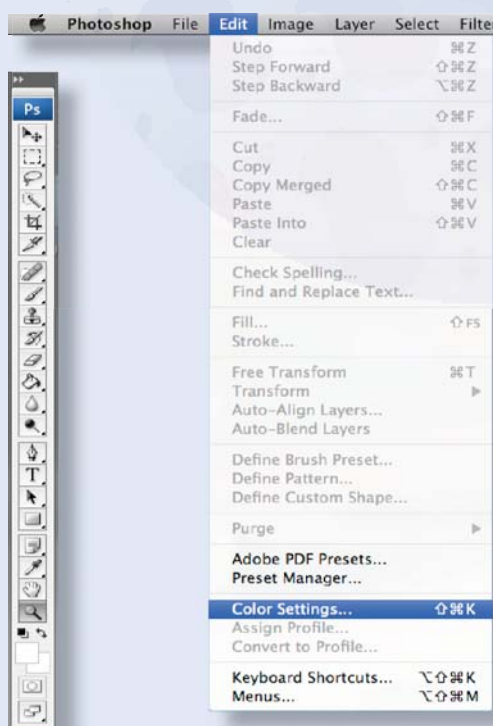
Profile setup for Soft Proofing

Before reading on, you should always first calibrate your monitor (please refer to the section on Monitor Calibration).

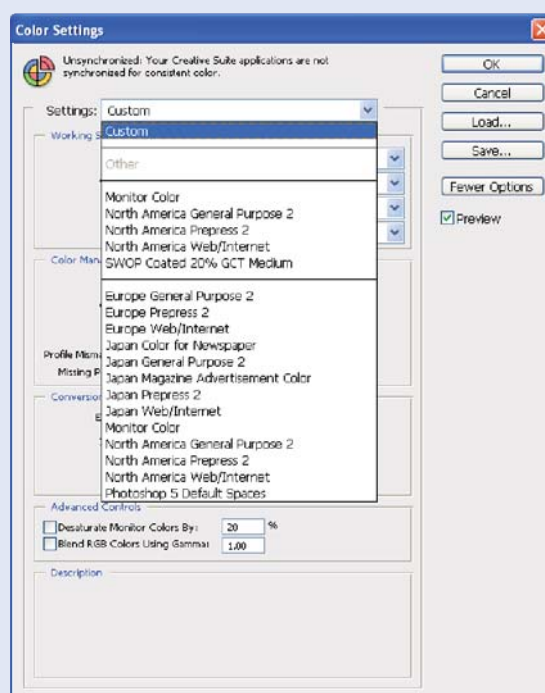
RGB has a larger gamut than CMYK, therefore for most general situations we suggest to make overall color adjustments in RGB mode before converting to CMYK printing mode.

This soft proofing profile setup is solely for soft proofing on your monitor and is NOT for RGB to CMYK Conversion . (please refer to RGB to CMYK Image Conversion section).

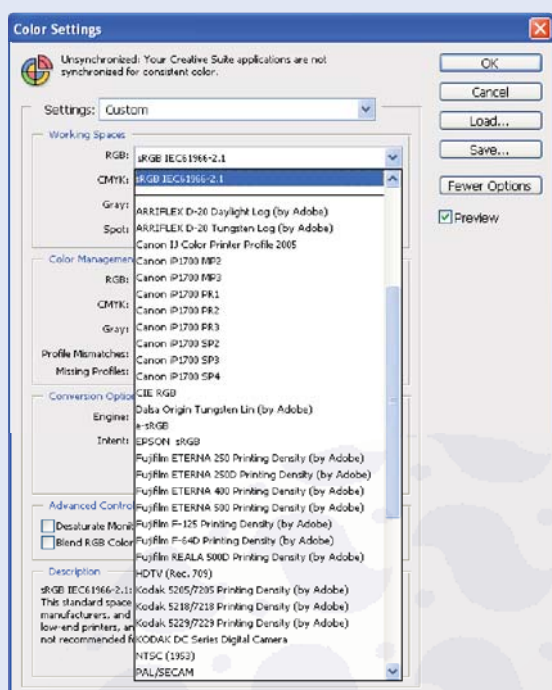
By downloading our (OGP_MattCoat) ICC Profile, you are able to preview from your monitor (soft-proofing) and output your digital proofs to achieve a closer match to OGP's system and proofing results. Follow these six steps:



Step 1: From the menu bar choose Edit and select "Color Setting".

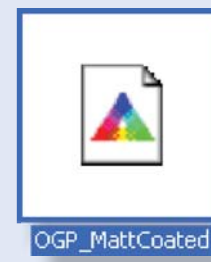
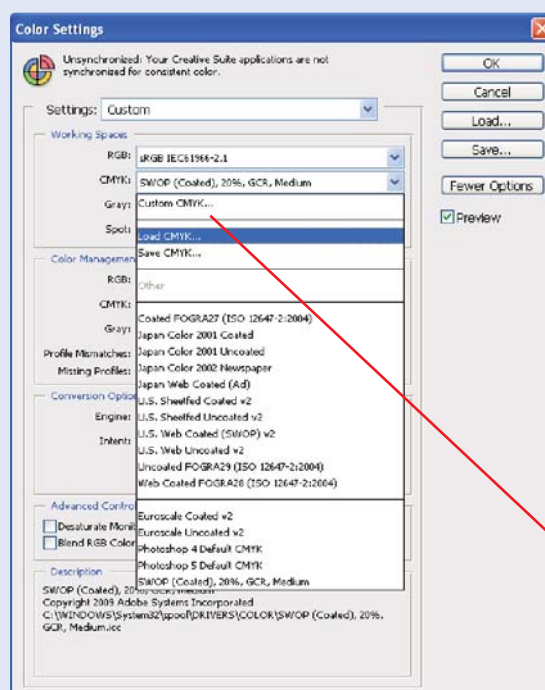


Step 2: In the "Color Setting" window, select "Custom" under Settings.



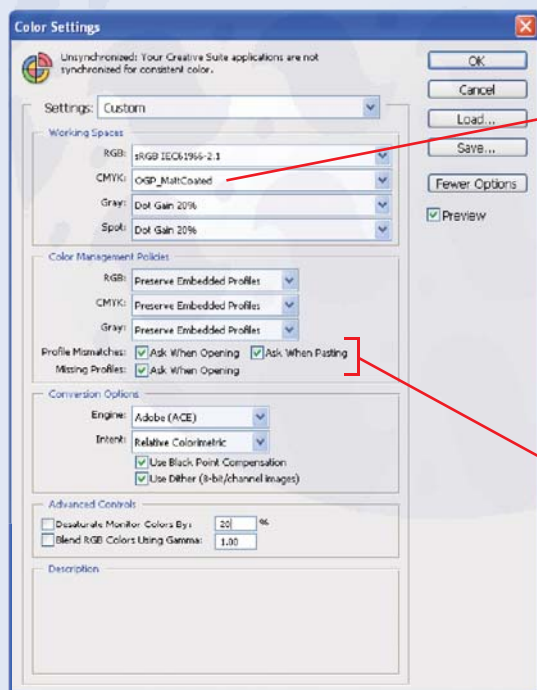
Step 3: Under Working Spaces area:

RGB: select "sRGB IEC61966-2.1" for RGB working space.



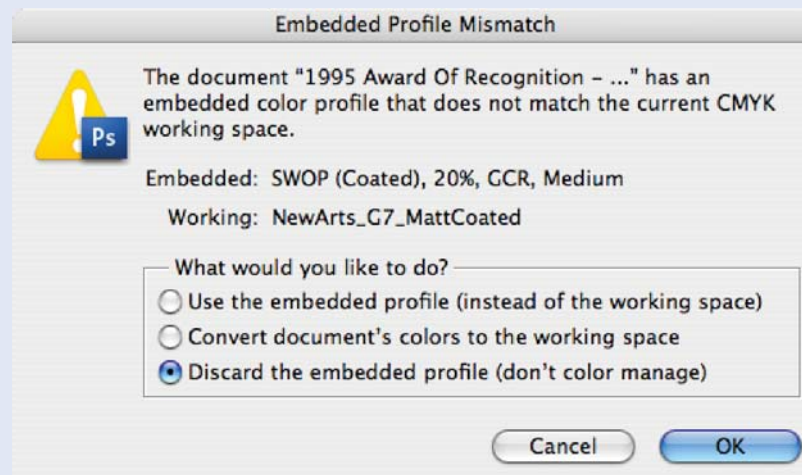
OGP_MattCoated

Step 4: Download by clicking the above icon (OGP_MattCoated) ICC Profile, then load this profile by selecting "Load CMYK..."



Step 5: By selecting "OGP_MattCoated" ICC profile you are able to preview from your monitor and forecast closer to OGP's proofing results.

Note: It is a good fail-safe practice to check these "Profile Mismatches" & "Missing Profiles" check boxes so that Photoshop will prompt you accordingly.



Step 6: When opening documents they may not have the same soft proofing profile as you have chosen - "OGP_MattCoated" ICC Profile under the CMYK Working Space. And when you open those mismatched documents the above window will pop open to prompt you. Please select, "Discard the embedded profile (don't color manage)" and click OK to continue so that you can work with "OGP_MattCoated" soft proofing ICC profile

Note: This ICC profile is NOT for RGB to CMYK conversion.